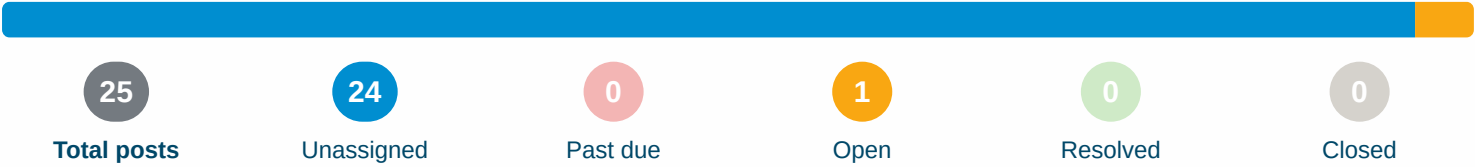




FOOD LION #1458 REVISED DRAIN SURVEY PER ENGINEERING REVIEW;
6/6/19 5/30/2018 - 6/6/2019



Posts

 **Open - Deficiency**

Post 3 - C05 and C09 - Cleanout weights were broken while accessing.



Dave Hughey - Crescent Construction Services

3/20/2019, 10:08 AM EDT

To: Assignees, Crescent Construction Services

Replace the entire cleanout fixtures.

Location  *Inside > Sales Floor*

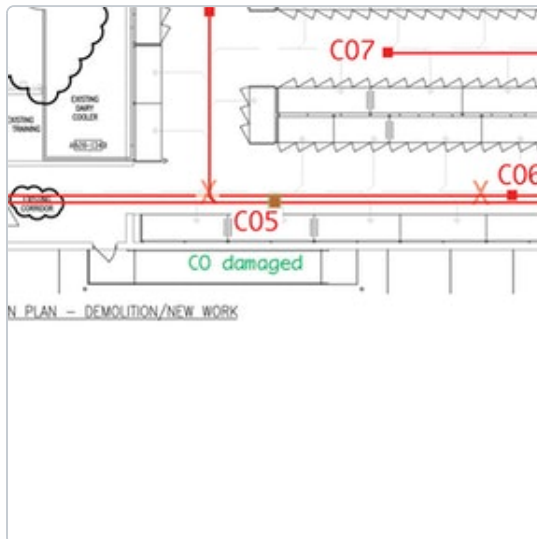
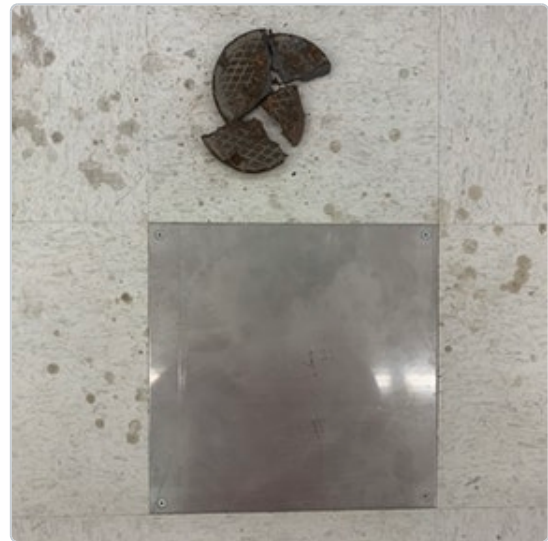
Assigned To 

 **Plumbing Contractor**

No due date

Open

All Media  4 photos




Updates



Dave Hughey - Crescent Construction Services

6/6/2019, 2:48 PM EDT

 Per email from Food Lion Engineering on 6/6/19, item is to be included in remodel documents.

**Unassigned****Post 2 - Latest print is attached (for reference).****Dave Hughey - Crescent Construction Services**

3/20/2019, 10:08 AM EDT

To: Crescent Construction Services

NOTE: Still shots of low spots are taken from the best view CCS can obtain from the video and this is not necessarily the lowest part of the line. Unless otherwise noted, line issues are located using the camera's foot meter which may vary by up to 10%. Red squares mark floor cleanouts, red triangles mark wall cleanouts, and red X's show where items have not been installed as per print.

Attachments  [fl1458_drain_survey_print_3-11-2019.pdf \(1.12 MB\)](#)

 **Unassigned****Post 4 - Construction Manager to review cleanouts for possible repair (for reference)****Dave Hughey - Crescent Construction Services**

3/20/2019, 10:06 AM EDT

To: Crescent Construction Services

The sales floor cleanouts typically have surrounding tile damage / unlevel / should be cleared of excess wax and debris. Ensure all are level with finish floor upon closeout of remodel. Consider replacing fixtures.

All Media  8 photos





Unassigned

Post 7 - Smoke test showed no issues - 03/11/2019



Dave Hughey - Crescent Construction Services

To: Crescent Construction Services

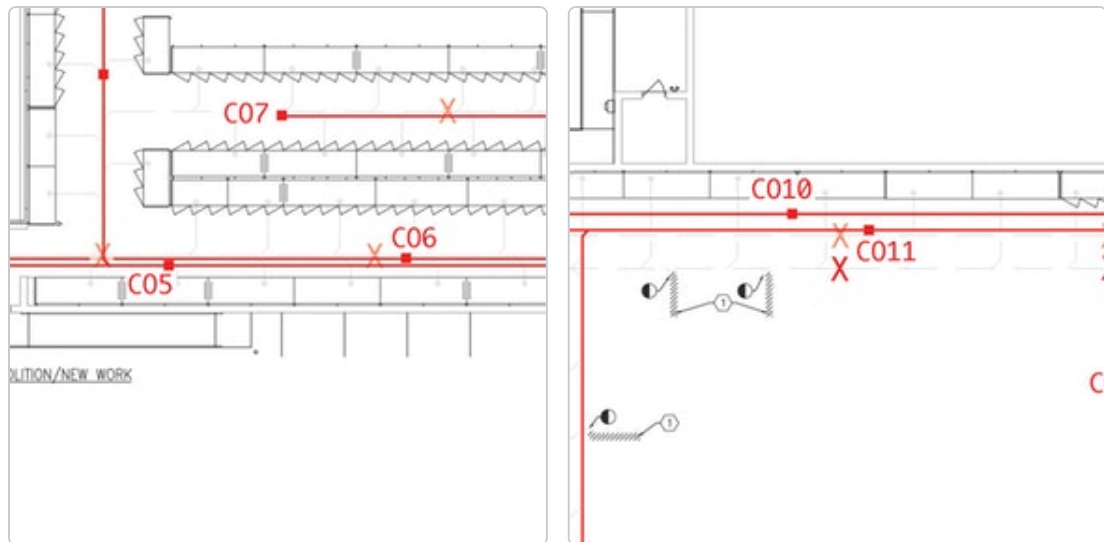
3/20/2019, 10:06 AM EDT

 Unassigned**Post 6 - Smoke test performed from cleanouts CO5, CO6, CO10 and CO11 - 03/11/2019****Dave Hughey - Crescent Construction Services**

3/20/2019, 10:06 AM EDT

To: Crescent Construction Services

All Media  6 photos



 Unassigned

Post 9 - Grease trap - Appears to be functioning normally with inlet 1/2" above outlet.

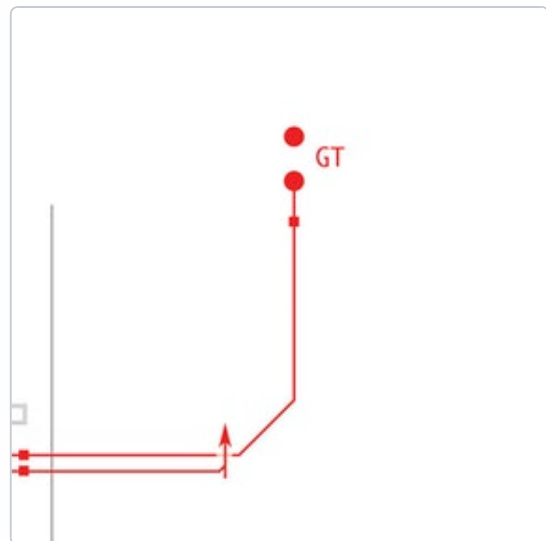


Dave Hughey - Crescent Construction Services

3/20/2019, 10:06 AM EDT

To: Crescent Construction Services

All Media  4 photos

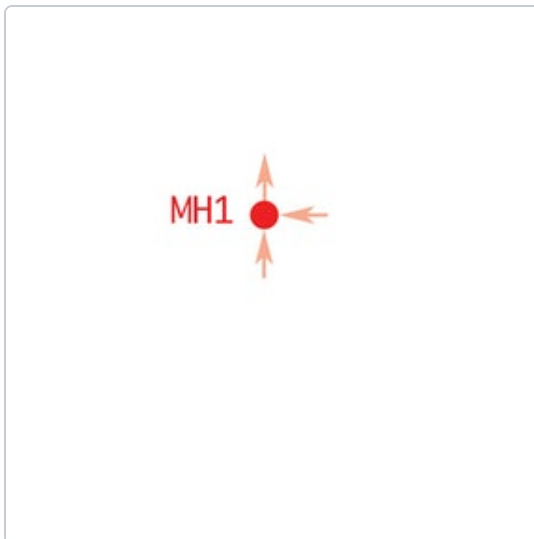


 Unassigned**Post 27 - Manhole MH1****Joshua Blanks - Crescent Construction Services**

3/20/2019, 10:06 AM EDT

To: Crescent Construction Services

Manhole is flowing/operating normally.

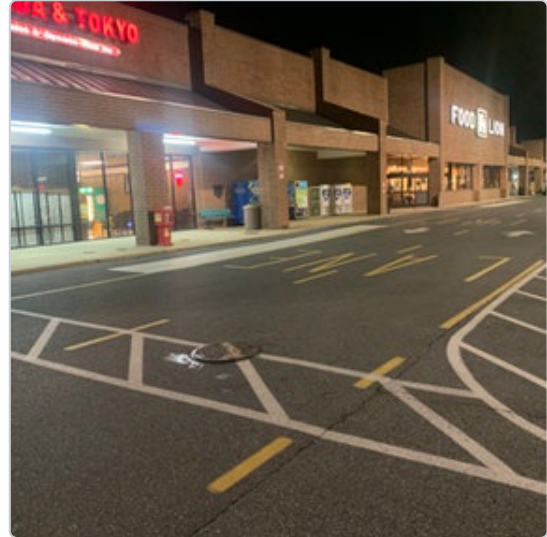
All Media  3 photos

 Unassigned**Post 14 - Manhole MH2****Joshua Blanks - Crescent Construction Services**

3/20/2019, 10:06 AM EDT

To: Crescent Construction Services

Manhole is flowing/operating normally.

All Media  3 photos

 Unassigned**Post 11 - Deli Equipment****Dave Hughey** - Crescent Construction Services

3/20/2019, 10:06 AM EDT

To: Crescent Construction Services

Recycle grease container verified to be onsite.

Rotisserie and fryers appear to be manually emptied.

All Media  5 photos

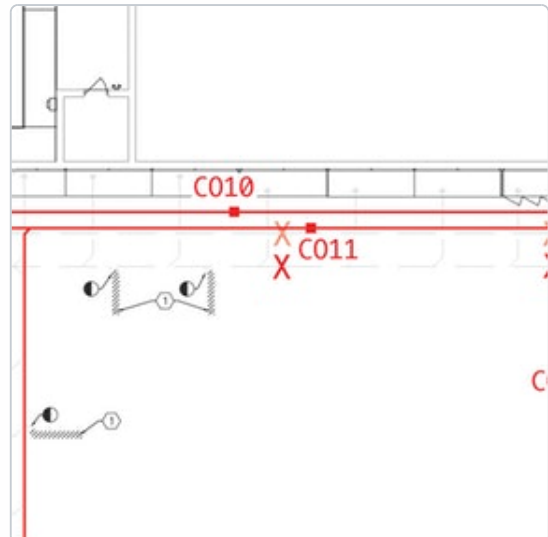
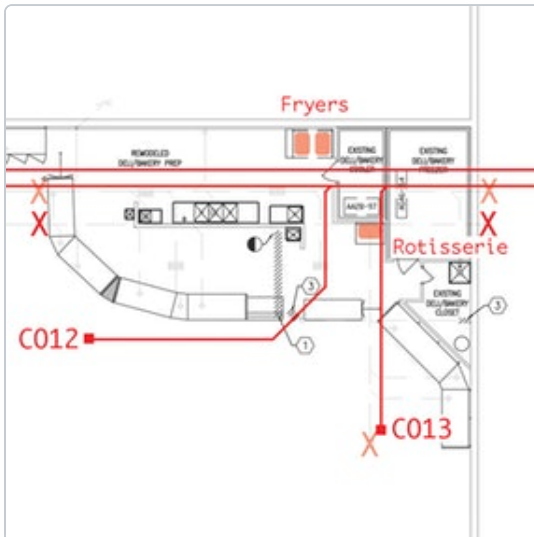
Unassigned**Post 13 - Deli grease drain - prep area verifications****Dave Hughey** - Crescent Construction Services

3/20/2019, 10:06 AM EDT

To: Crescent Construction Services

The deli prep area floor drains, prep sinks, and mop sink were confirmed to go to CO10 line.

All grease prep area sinks and drains were confirmed to go to the existing grease trap.

All Media  4 photos

Unassigned**Post 12 - Meat grease drain - prep area verifications****Dave Hughey** - Crescent Construction Services

3/20/2019, 10:06 AM EDT

To: Crescent Construction Services

The meat prep area floor drains, three-compartment sink, and grocery storage mop sink were confirmed to go to CO2 line.

All grease prep area sinks and drains were confirmed to go to the existing grease trap.

All Media  3 photos

Unassigned

Post 10 - All individual prep area grease waste drains were cleaned with mini jet kit.

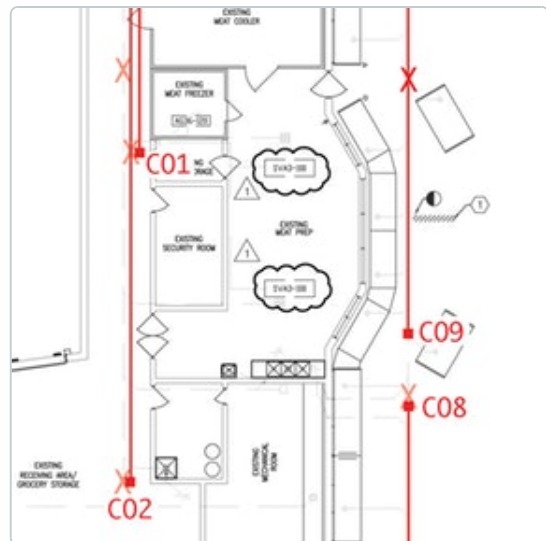
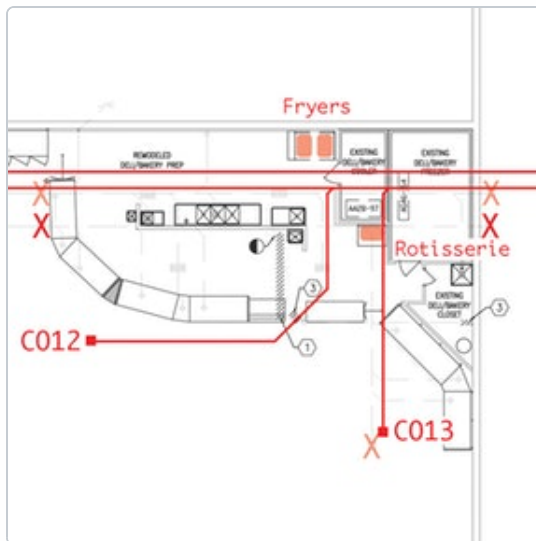


Dave Hughey - Crescent Construction Services

To: Crescent Construction Services

3/20/2019, 10:06 AM EDT

All Media  4 photos

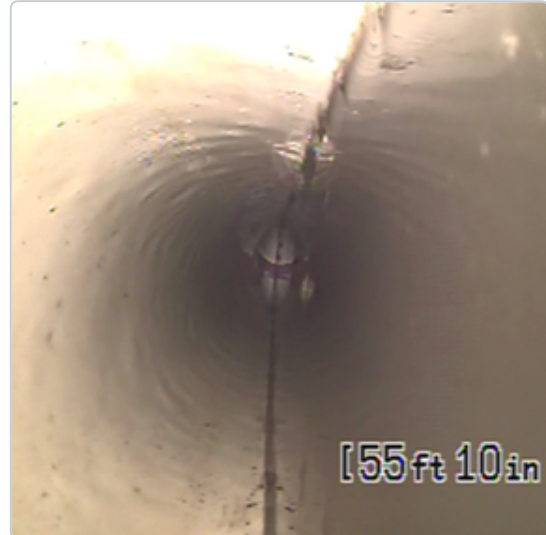


 **Unassigned****Post 26 - CO1 video (for reference)****Dave Hughey - Crescent Construction Services**

3/20/2019, 10:06 AM EDT

To: Crescent Construction Services

CO1 line: Invert elevation is 30.5" BFF. Jetted line. Filmed backwards from CO11. Two back-to-back sags from 55' to 117' (2"+, with camera underwater most of issue). Sag from

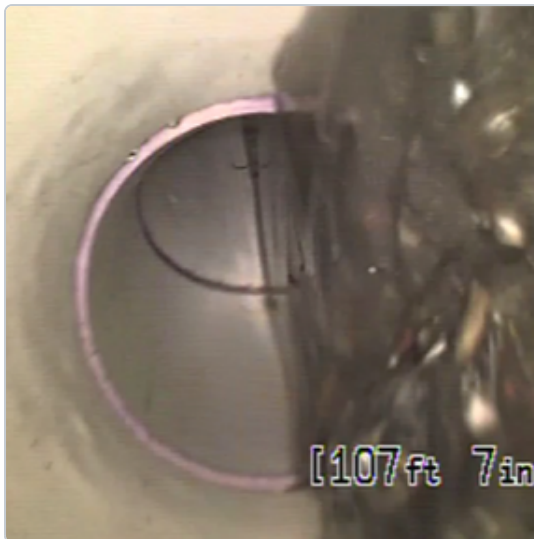
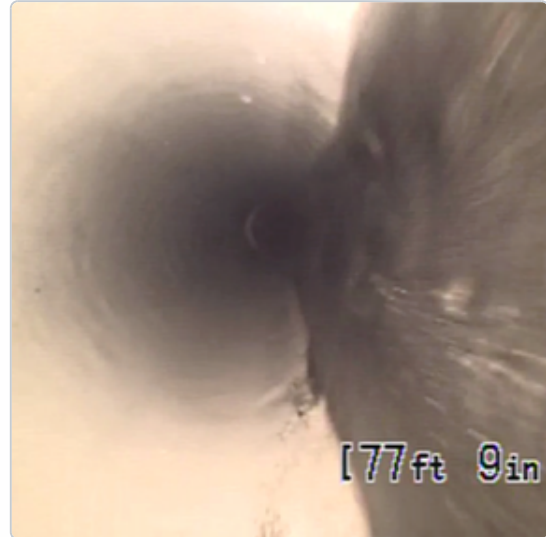
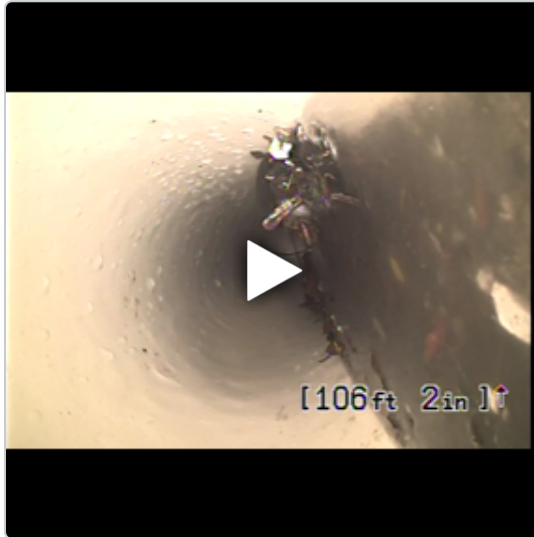
Categories  *Condensate line*All Media  1 video, 1 photo

 Unassigned**Post 25 - CO2 video (for reference)****Dave Hughey** - Crescent Construction Services

3/20/2019, 10:05 AM EDT

To: Crescent Construction Services

CO2 line: Invert elevation is 31.75" BFF. Jetted line. Filmed backwards from CO10.
Sag from 75' to 92' (0.5"+). Sag from 106' to 136' (1.5").

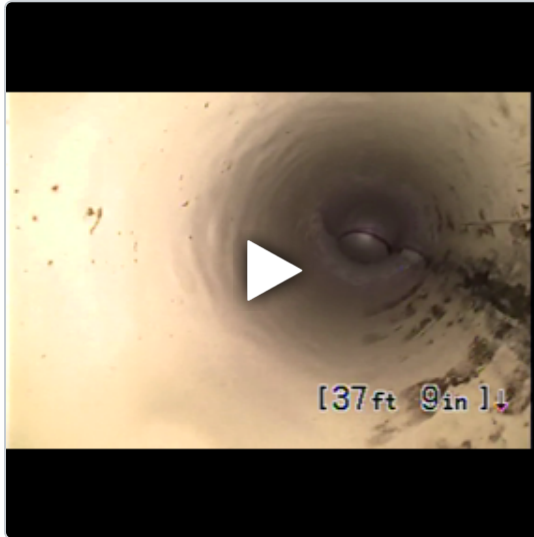
Categories  *Grease line*All Media  1 video, 2 photos

 **Unassigned****Post 24 - CO3 video (for reference)****Dave Hughey - Crescent Construction Services**

3/20/2019, 10:05 AM EDT

To: Crescent Construction Services

CO3 line: Invert elevation is 17.25" BFF. Jetted line. Filmed backwards from CO5.
Line in good shape.

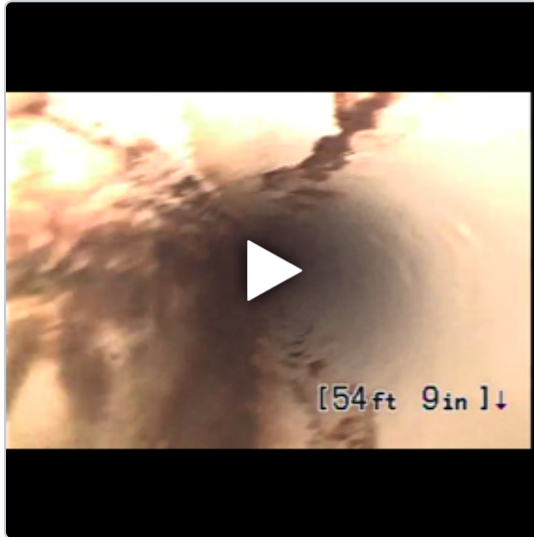
Categories  *Condensate line*All Media  1 video

 **Unassigned****Post 23 - CO4 video (for reference)****Dave Hughey** - Crescent Construction Services

3/20/2019, 10:05 AM EDT

To: Crescent Construction Services

CO4 line: Filmed backwards from CO6. 3" reducer in cleanout. Pipe anomaly (11:00 to 1:00 line position; less than 5% line loss) at 63'.

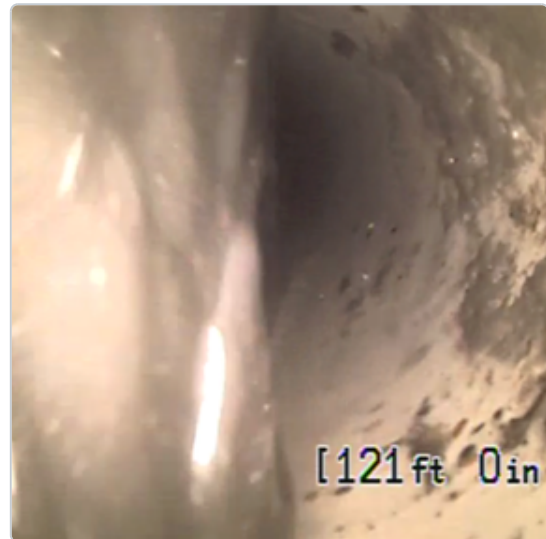
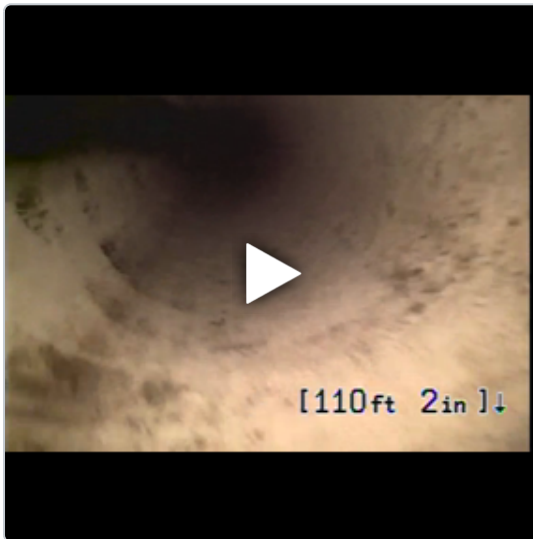
Categories  **Restroom line**All Media  1 video, 1 photo

 Unassigned**Post 22 - CO5 video (for reference)****Dave Hughey** - Crescent Construction Services

3/20/2019, 10:05 AM EDT

To: Crescent Construction Services

CO5 line: Invert elevation is 42.25" BFF. Jetted line. Filmed backwards from site line. Sag from 118' to 141' (2", with camera underwater most of issue). Joint offset at 141'. Sag from 153' to 163' (2", with camera underwater part of issue). Sag from 171' to 176' (1").

Categories  *Site line, Condensate line*All Media  1 video, 4 photos

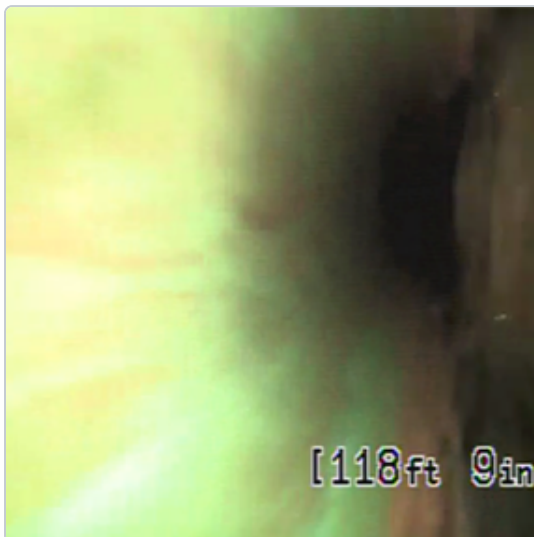
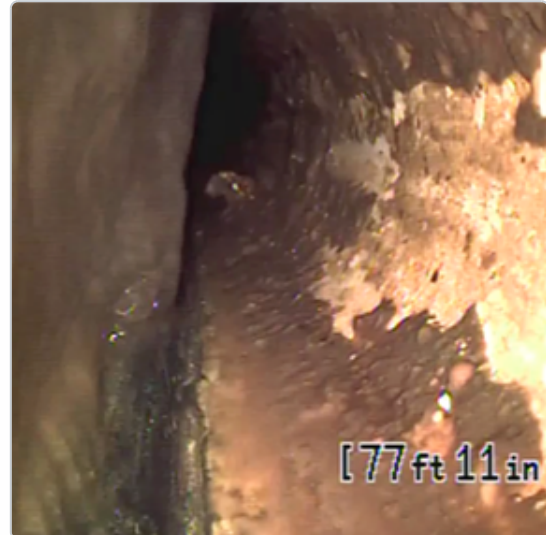


 Unassigned**Post 21 - CO6 video (for reference)****Dave Hughey** - Crescent Construction Services

3/20/2019, 10:05 AM EDT

To: Crescent Construction Services

CO6 line: Invert elevation is 47" BFF. Filmed backwards from site line. Sag from 67' to 98' (2", with camera underwater part of issue). Sag from 117' to 124' (1.5"+). Sag from 134' to 141' (1").

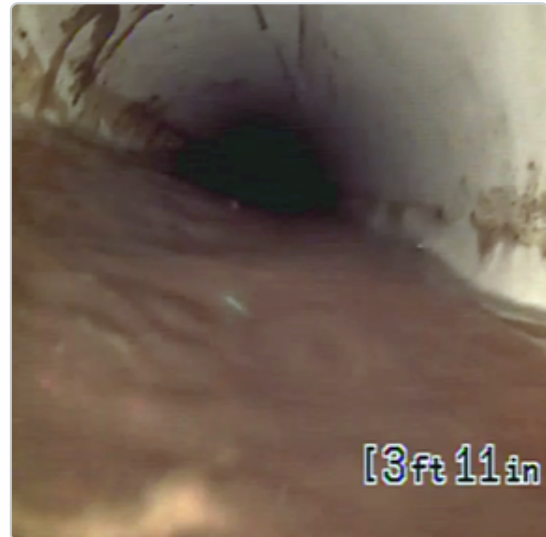
Categories  *Site line, Restroom line*All Media  1 video, 2 photos

 **Unassigned****Post 20 - CO7 video (for reference)****Dave Hughey** - Crescent Construction Services

3/20/2019, 10:05 AM EDT

To: Crescent Construction Services

CO7 line: Invert elevation is 37.25" BFF. Filmed backwards from CO5 line. Sag from cleanout to 34' (1.5"+).

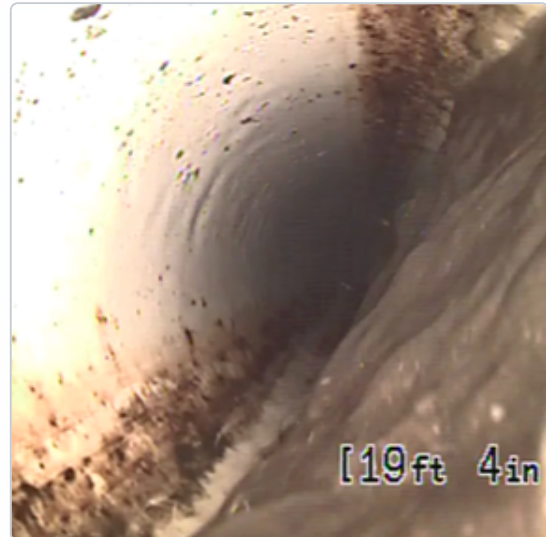
Categories  **Condensate line**All Media  **1 video, 1 photo**

 Unassigned**Post 19 - CO8 video (for reference)****Dave Hughey** - Crescent Construction Services

3/20/2019, 10:05 AM EDT

To: Crescent Construction Services

CO8 line: Invert elevation is 33" BFF. Filmed backwards from CO3 line. Sag from 13' to 24' (1.5"+).

Categories  *Condensate line*All Media  1 video, 1 photo

 **Unassigned****Post 18 - CO9 video (for reference)****Dave Hughey** - Crescent Construction Services

3/20/2019, 10:05 AM EDT

To: Crescent Construction Services

CO9 line: Invert elevation is 36.75" BFF. Jetted line. Filmed backwards from CO1 line. Line in good shape.

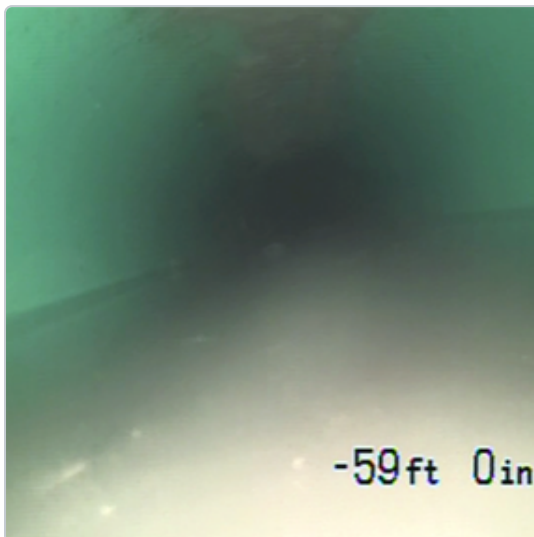
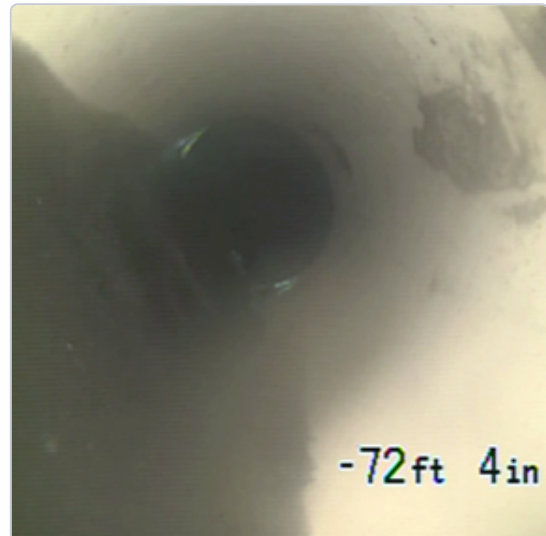
Categories  *Condensate line*All Media  *1 video*

 Unassigned**Post 17 - CO10 video (for reference)****Dave Hughey - Crescent Construction Services**

3/20/2019, 10:05 AM EDT

To: Crescent Construction Services

CO10 line: Invert elevation is 50" BFF. Jetted line. Filmed backwards from grease trap. Joint offset at 110' with associated sag from 106' to 110' (1"). Sag from 120' to 125' (1.5"+).

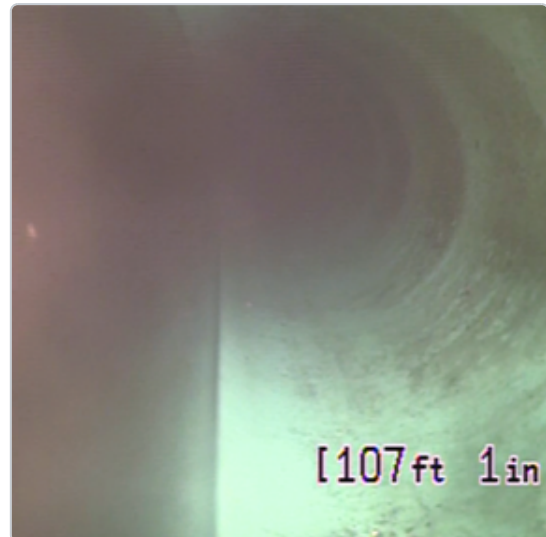
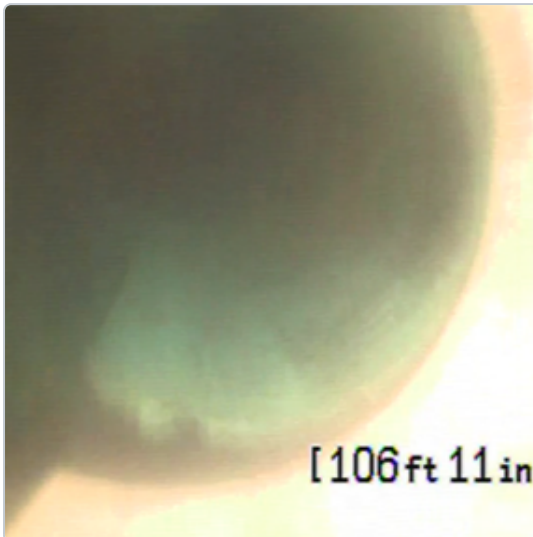
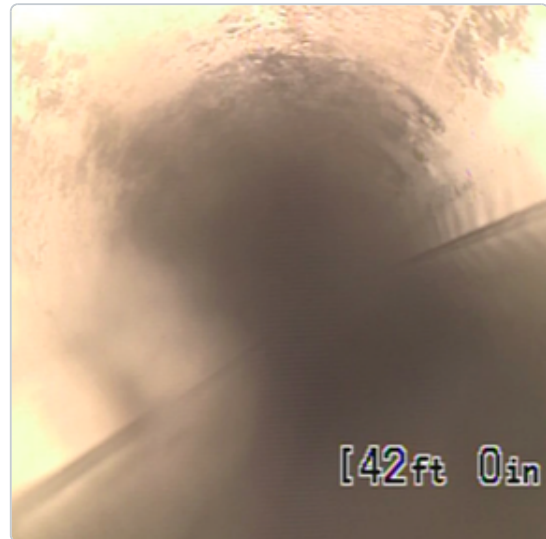
Categories  *Site line, Grease line*All Media  1 video, 2 photos

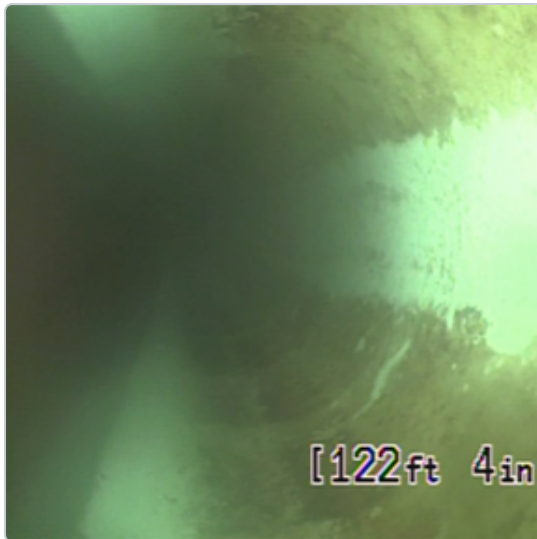
 Unassigned**Post 16 - CO11 video (for reference)****Dave Hughey** - Crescent Construction Services

3/20/2019, 10:05 AM EDT

To: Crescent Construction Services

CO11 line: Invert elevation is 48.75" BFF. Jetted line. Filmed backwards from site line. Sag from 32' to 50' (2", with camera underwater part of issue). Joint offset at 107' with associated sag from 106' to 112' (1"+). Sag from 119' to 124' (0.5"+). Sag from 136' to 143' (1").

Categories  *Site line, Condensate line*All Media  1 video, 5 photos

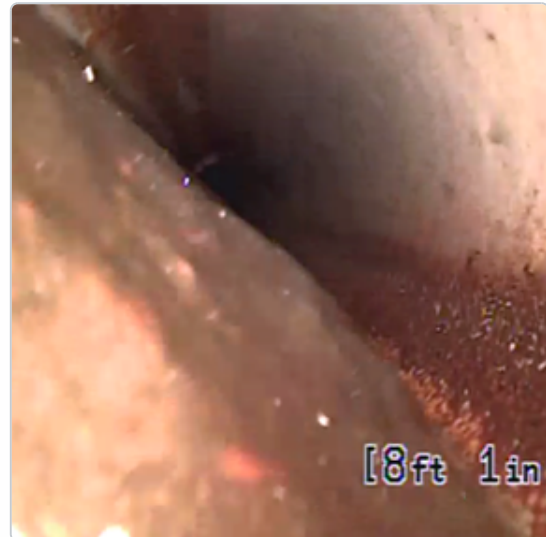


 Unassigned**Post 15 - CO12 video (for reference)****Dave Hughey** - Crescent Construction Services

3/20/2019, 10:05 AM EDT

To: Crescent Construction Services

CO12 line: Invert elevation is 37.75" BFF. Filmed backwards from CO11 line. Sag from cleanout to 19' (1").

Categories  *Condensate line*All Media  1 video, 1 photo

 Unassigned**Post 1 - CO13 video (for reference)****Dave Hughey** - Crescent Construction Services

3/20/2019, 10:05 AM EDT

To: Crescent Construction Services

CO13 line: Invert elevation is 45.25" BFF. Filmed backwards from CO11 line. Line in good shape.

Categories  *Condensate line*All Media  1 video